



**2f/182 Dornoch Terrace Highgate Hill QLD**

**2** **1**

UNDER APPLICATION NO FURTHER INSPECTIONS REQUIRED.

Situated in the ever so popular character filled Torbreck building is this good size 2 bedroom unit. Freshly painted, updated kitchen including a fridge and, internal laundry and a shower over a full size bath, and a well lit lounge room and dining area offer beautiful views to the south. An ideal unit for the busy professional or couple. There is no dedicated car accommodation for this unit, there is a carpark for the building at the rear and on street parking available to first in first served basis.

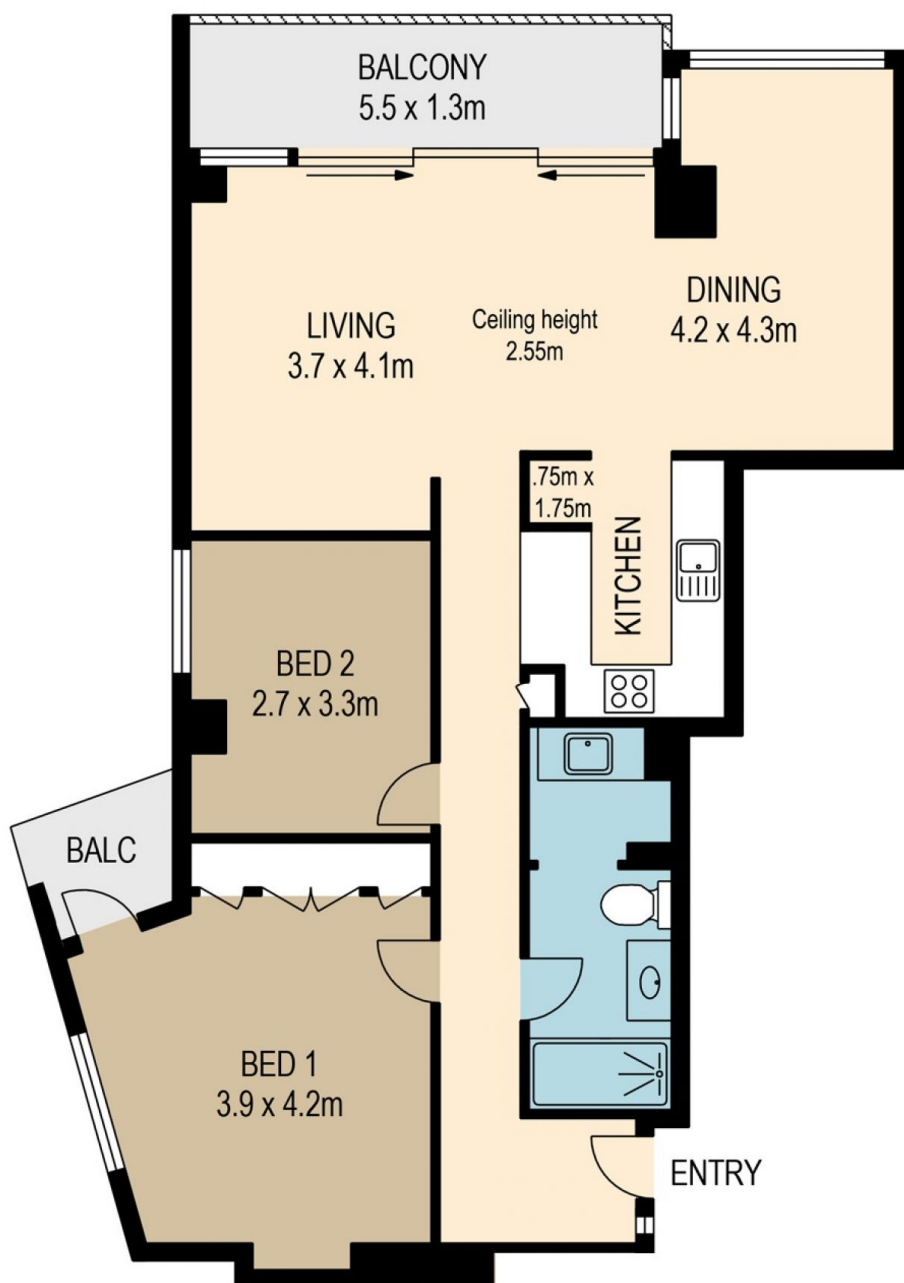
The complex offers lift access to the unit, an inground pool, and the viewing tower which is available to all residents. A

**Type** : Unit  
**Building Size** : 89 sqm  
**View** : <https://www.brisbaneboutique.com/lease/qld/inner-south/highgate-hill/residential/unit/8042877>



**Pelham Marsh**  
**3169 0230**

[For full version visit the website](https://www.brisbaneboutique.com)



SCALE (METRES)

PLANS SHOWN ONLY INDICATIVE OF LAYOUT. DIMENSIONS ARE APPROXIMATE.

All information contained herein is gathered from sources we believe to be reliable. However we cannot guarantee its accuracy and interested persons should rely on their own enquiries.

| internal | external |
|----------|----------|
| 73sqm    | 9sqm     |



2F -182 DORNOCH TERRACE

Created by RealScope®  
www.realscope.com.au