

# Brisbane Boutique Property



4/61 Shire Street Coorparoo QLD

2  1  2 

UNDER APPLICAION - NO FURTHER INSPECTIONS AVAILABLE.

Brilliant fully renovated top floor 2 bedroom unit with an eclectic industrial finish. With a spacious living and dining room, and a beautiful Caesar stone kitchen with stainless appliances, a massive bathroom, a separate toilet, and two good size bedrooms, the master has built in robes.

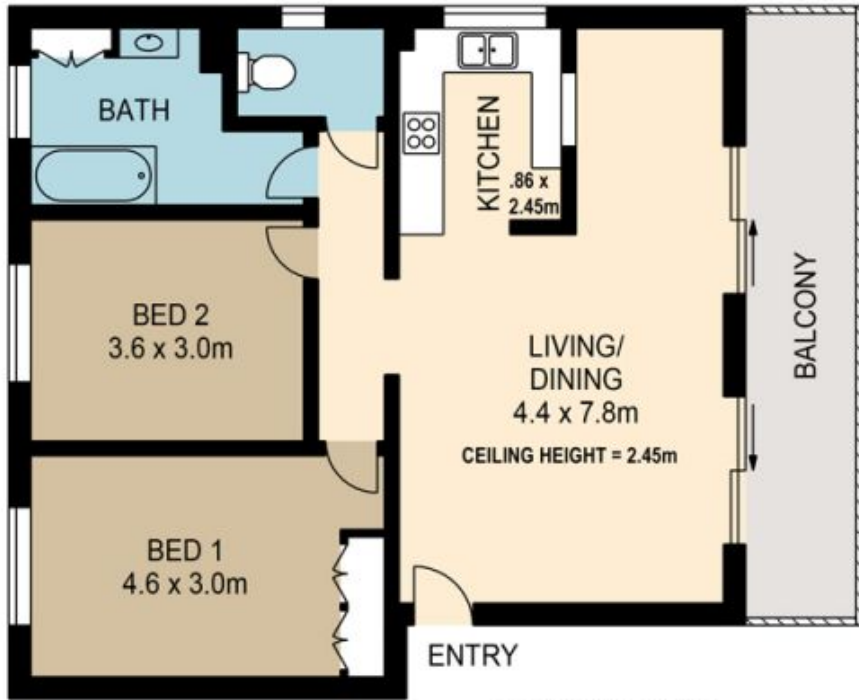
Sitting on the top floor this North East corner unit captures loads of plethora of natural light and the unit offers fantastic local views to the east over Camp Hill, and North to City glimpses from the balcony and the kitchen window. This is a safe a secure unit with security intercom access to the front door and a huge garage that will house two small cars

[For full version visit the website](https://www.brisbaneboutique.com)

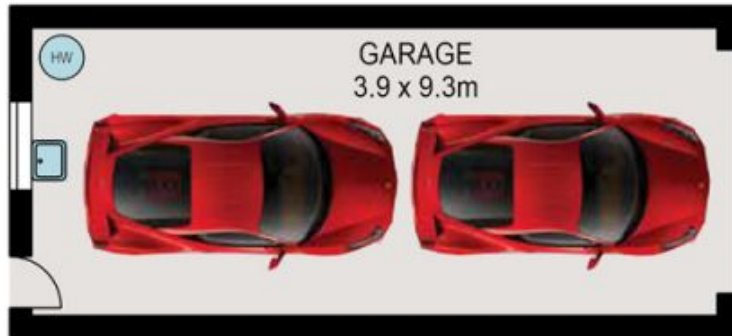
**Type** : Unit  
**Building Size** : 126 sqm  
**View** : <https://www.brisbaneboutique.com/lease/qld/southside/coorparoo/residential/unit/8066199>



**Pelham Marsh**  
3169 0230



**UPPER LEVEL**



**LOWER LEVEL**



PLANS SHOWN ONLY INDICATIVE OF LAYOUT. DIMENSIONS ARE APPROXIMATE.

All information contained herein is gathered from sources we believe to be reliable. However we cannot guarantee its accuracy and interested persons should rely on their own enquiries.

	internal	external
lower	36sqm	
upper	78sqm	12sqm
<b>total</b>	<b>114sqm</b>	<b>12sqm</b>



**4-61 SHIRE STREET**

Created by RealScope®  
www.realscope.com.au