

Brisbane Boutique Property



21305/19 Wilson Street West End QLD

2 **2** **1**

Just Wow! Sitting on the 13th floor of Building 1 "Lexington" in the infamous "West Village" sits this gorgeous, larger than most in the complex, 2 bedroom + Study Nook, 2 bathroom unit, and 1 dedicated car space, offering luxurious fixtures and fittings, a 17m2 balcony, and you can choose to rent with or without car accommodation.

The unit has breath taking south facing views across greater Brisbane towards Mount Warning and The Great Dividing Range. the artistic design of the facility has Bromley art adorning the halls, foyer's and common area's.

Sitting only 1.5ks from the city, right smack bang in the heart of the beautiful, culturally diverse suburb of West

[For full version visit the website](https://www.brisbaneboutique.com)

Type	: Apartment
Price	: \$850 per week
Building Size	: 112 sqm
View	: https://www.brisbaneboutique.com/lease/qld/inner-south/west-end/residential/apartment/8184555

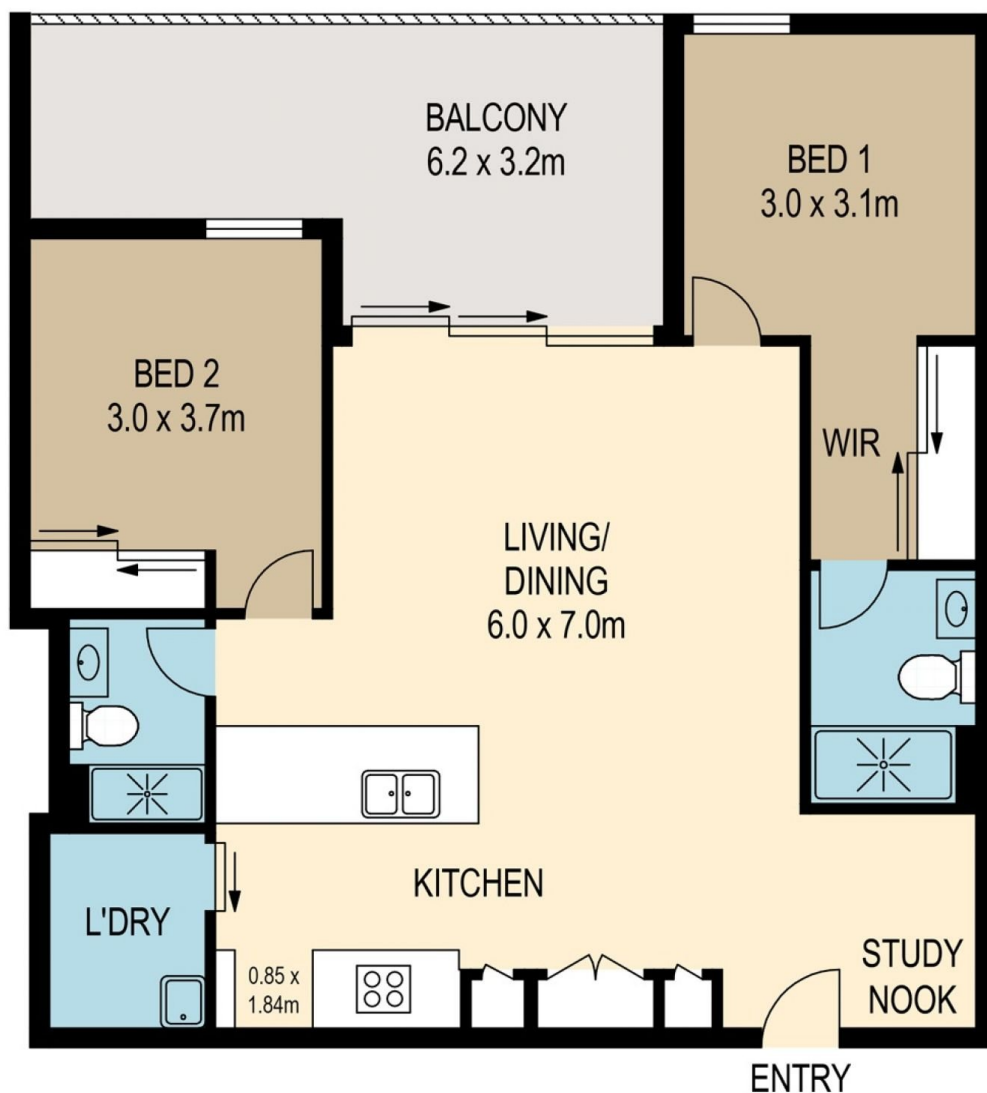


Pelham Marsh
3169 0230

<https://www.brisbaneboutique.com>



GARAGE LEVEL



APARTMENT LEVEL



SCALE (METRES)

PLANS SHOWN ONLY INDICATIVE OF LAYOUT. DIMENSIONS ARE APPROXIMATE.

All information contained herein is gathered from sources we believe to be reliable.
However we cannot guarantee its accuracy and interested persons should rely on their own enquiries.

internal	81sqm
balcony	17sqm
garage	14sqm
total	112sqm



21305-19 WILSON STREET